

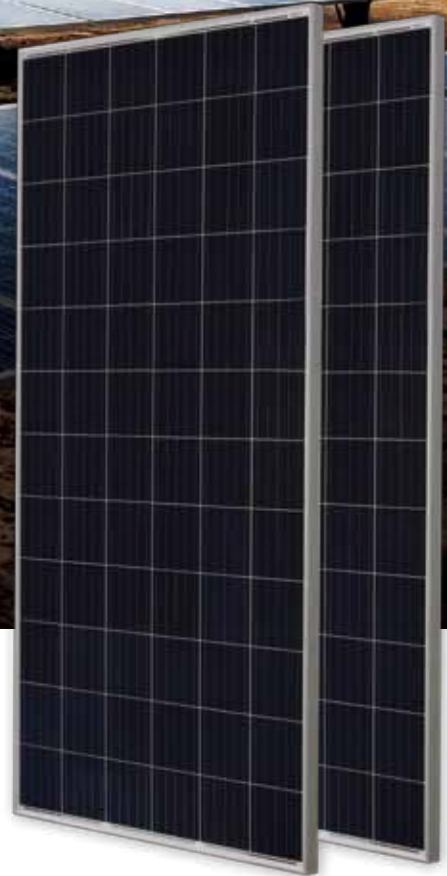


335W Module

JAP72S01 315-335/SC Series

Introduction

This time-tested legacy module series has been proven to be one of the powerful and most reliable products offered by JA Solar and the most popular choice by PV system installers and customers around world.



5 busbar solar cell design



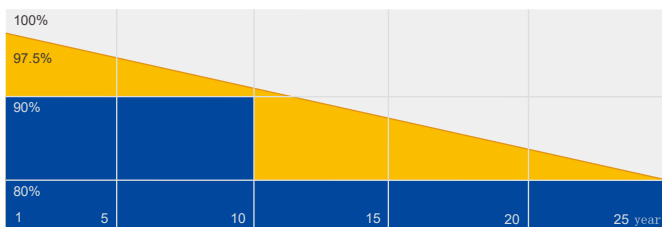
Low cost



Highly reliable due to strict quality control

Superior Warranty

- 12-year product warranty
- 25-year linear power output warranty



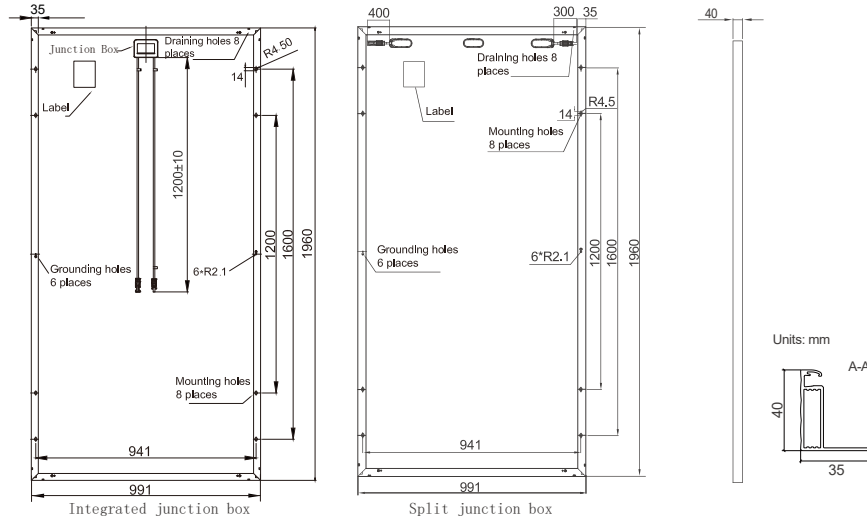
■ JA Linear Power Warranty ■ Industry Warranty

Comprehensive Certificates

- IEC 61215, IEC 61730
- ISO 9001: 2015 Quality management systems
- ISO 14001: 2015 Environmental management systems
- OHSAS 18001: 2007 Occupational health and safety management systems



MECHANICAL DIAGRAMS



Remark: customized frame color and cable length available upon request

SPECIFICATIONS

Cell	Poly
Weight	22.5kg±3%
Dimensions	1960mm×991mm×40mm
Cable Cross Section Size	4mm ²
No. of cells	72(6x12)
Connector	PV-ZH202B PV-KST4-EV02/xy, PV-KBT4-EV02/xy QC4.10-35/45 TL-Cable01S-F UTXCFA4AM, UTXCMA4AM
Country of Manufacturer	China/Vietnam

ELECTRICAL PARAMETERS AT STC

TYPE	JAP72S01 -315/SC	JAP72S01 -320/SC	JAP72S01 -325/SC	JAP72S01 -330/SC	JAP72S01 -335/SC
Rated Maximum Power(P _{max}) [W]	315	320	325	330	335
Open Circuit Voltage(V _{oc}) [V]	45.85	46.12	46.38	46.40	46.70
Maximum Power Voltage(V _{mp}) [V]	37.09	37.28	37.39	37.65	37.83
Short Circuit Current(I _{sc}) [A]	9.01	9.09	9.17	9.28	9.35
Maximum Power Current(I _{mp}) [A]	8.49	8.58	8.69	8.77	8.87
Module Efficiency [%]	16.2	16.5	16.7	17.0	17.2
Power Tolerance	0~+5W				
Temperature Coefficient of I _{sc} (α _{Isc})	+0.058%/°C				
Temperature Coefficient of V _{oc} (β _{Voc})	-0.330%/°C				
Temperature Coefficient of P _{max} (γ _{Pmp})	-0.400%/°C				
STC	Irradiance 1000W/m ² , cell temperature 25°C, AM1.5G				

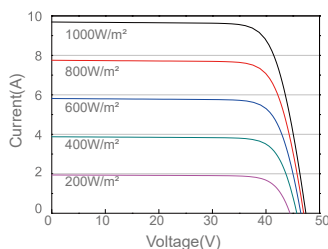
Remark: Electrical data in this catalog do not refer to a single module and they are not part of the offer. They only serve for comparison among different module types.

ELECTRICAL PARAMETERS AT NOCT

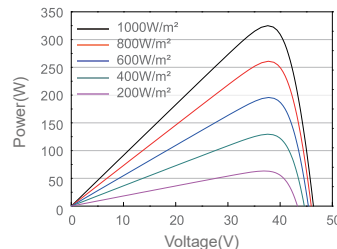
TYPE	JAP72S01 -315/SC	JAP72S01 -320/SC	JAP72S01 -325/SC	JAP72S01 -330/SC	JAP72S01 -335/SC	Maximum System Voltage	1500V DC(IEC)
Rated Max Power(P _{max}) [W]	233	237	241	244	248	Operating Temperature	-40°C~+85°C
Open Circuit Voltage(V _{oc}) [V]	42.84	43.04	43.24	43.41	43.63	Maximum Series Fuse	20A
Max Power Voltage(V _{mp}) [V]	34.45	34.64	34.82	35.03	35.21	Maximum Static Load,Front	3600Pa, 1.5
Short Circuit Current(I _{sc}) [A]	7.23	7.29	7.35	7.40	7.46	Maximum Static Load,Back	1600Pa,1.5
Max Power Current(I _{mp}) [A]	6.77	6.84	6.91	6.97	7.04	NOCT	45±2°C
NOCT	Irradiance 800W/m ² , ambient temperature 20°C, wind speed 1m/s, AM1.5G					Application Class	Class A

CHARACTERISTICS

Current-Voltage Curve JAP72S01-325/SC



Power-Voltage Curve JAP72S01-325/SC



Current-Voltage Curve JAP72S01-325/SC

